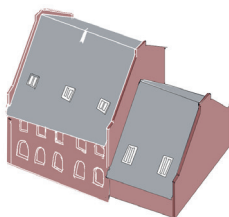


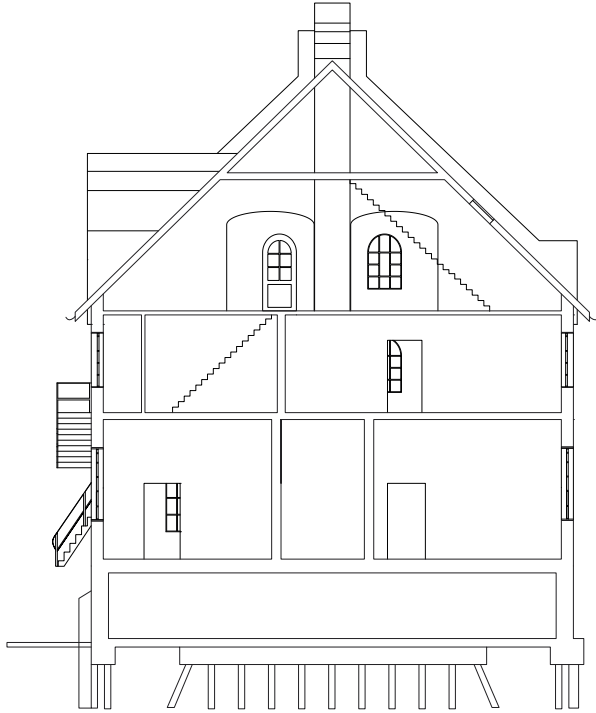
Kedelsmedjen

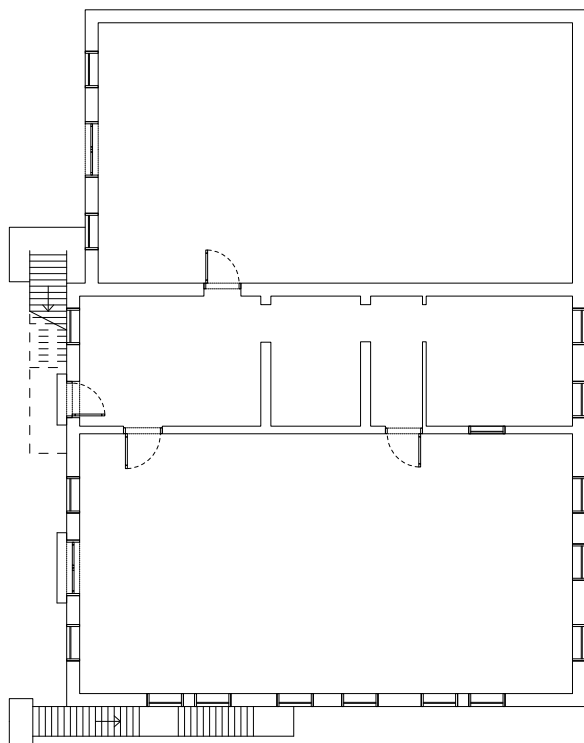
Trangravsvej 11

Site registrations from site visit
28/02/2023



The building consists of two adjoined buildings - one of them on three floors, an attic and a basement (that is not accessible), and the other one is an open space with double height and visible roof structure.

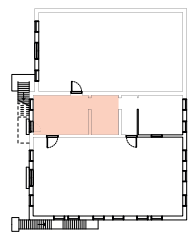




0 Ground floor



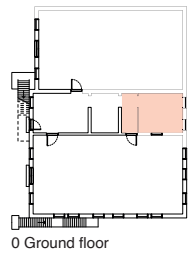
Entrance space



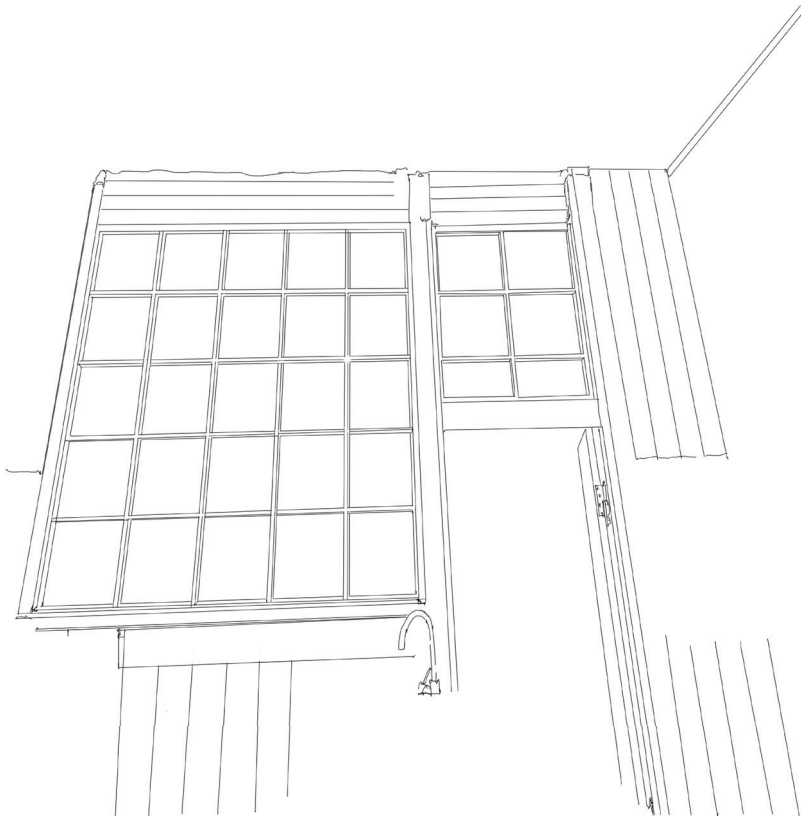
0 Ground floor

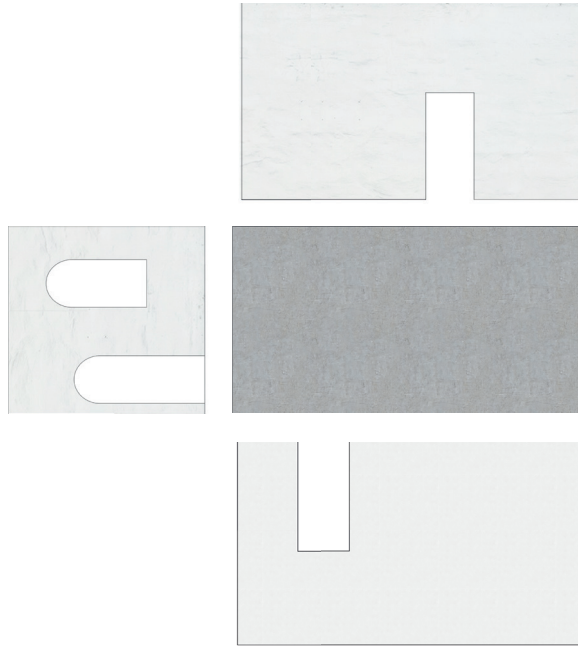


The old café

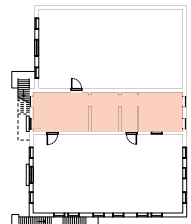
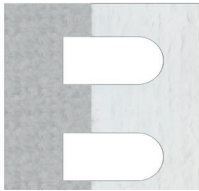


0 Ground floor





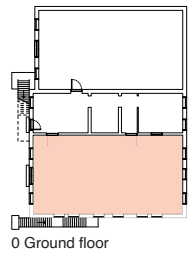
Developed surface of the core
of the ground floor



0 Ground floor

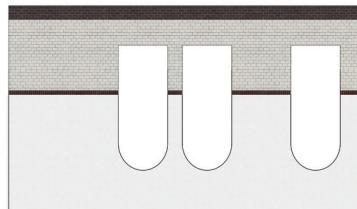
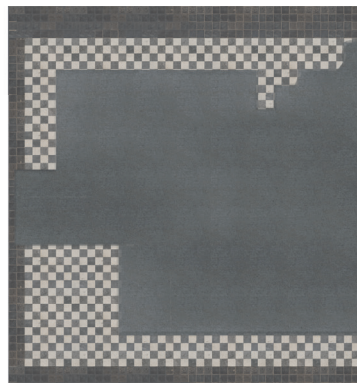


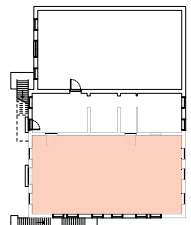
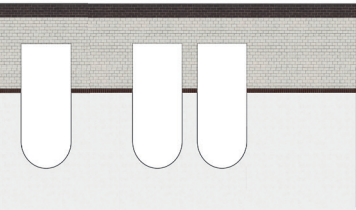
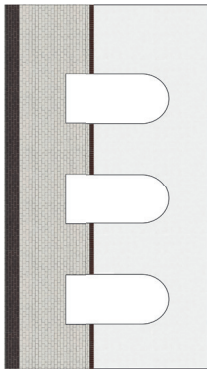
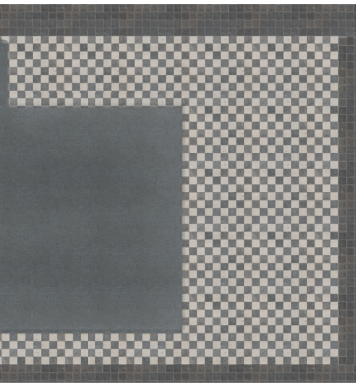
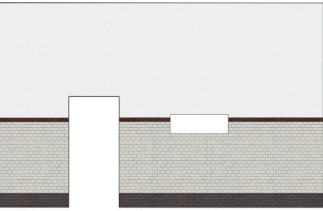
The future workshop space





Developed surface of the
future workshop space

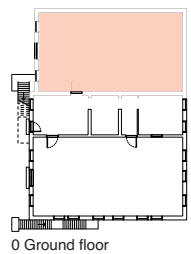




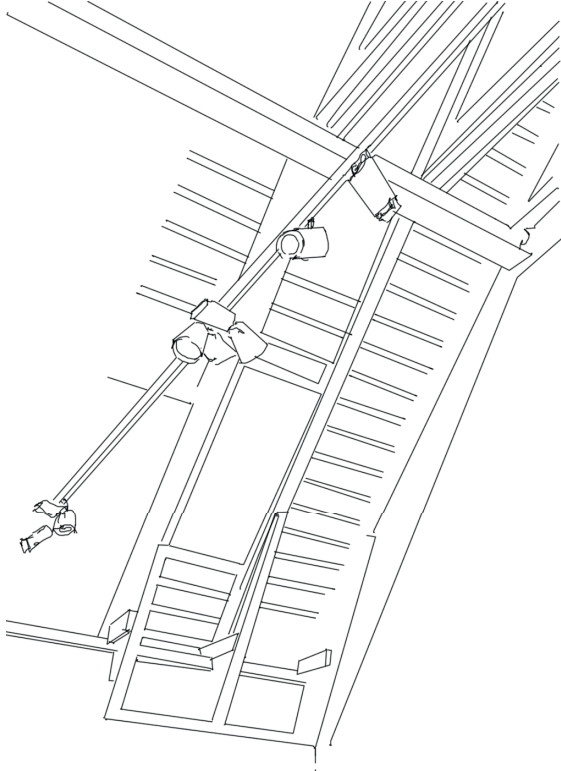
0 Ground floor



The future performance space
(Main stage)

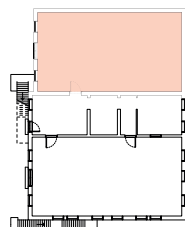


0 Ground floor

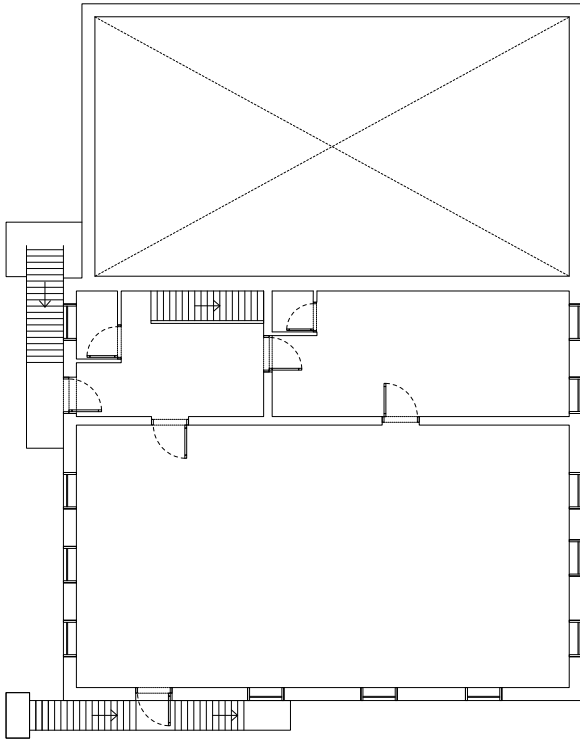


Developed surface of the future
performance space





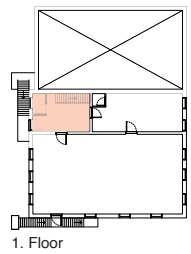
0 Ground floor



1. Floor



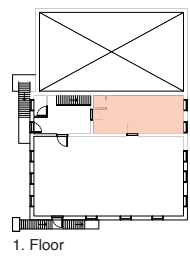
Entrance space 1st floor



1. Floor

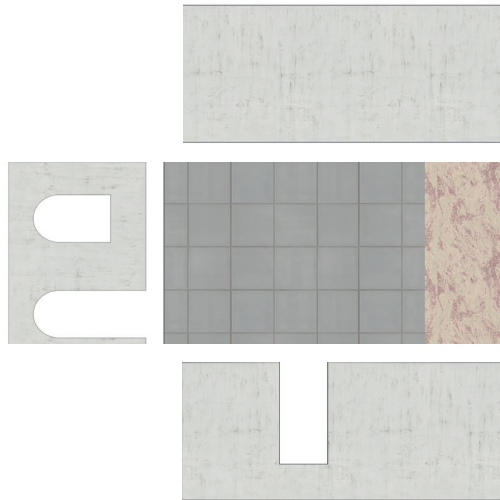


Corridor and tea kitchen

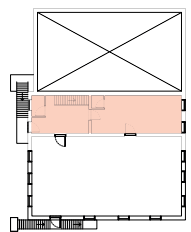
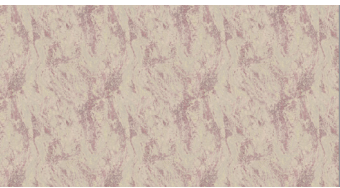




Views from the 1st floor windows



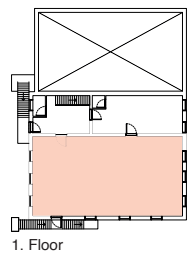
Developed surface of the core
on the 1st floor



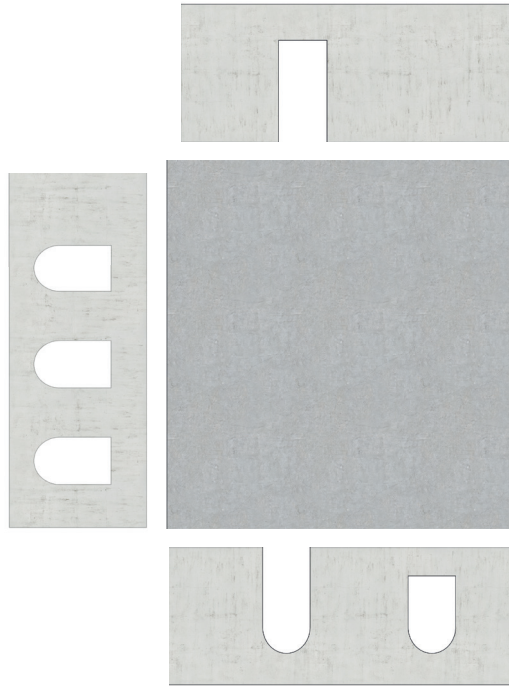
1. Floor



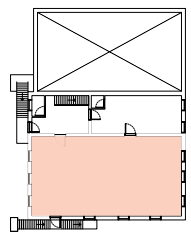
Future movement and body training space



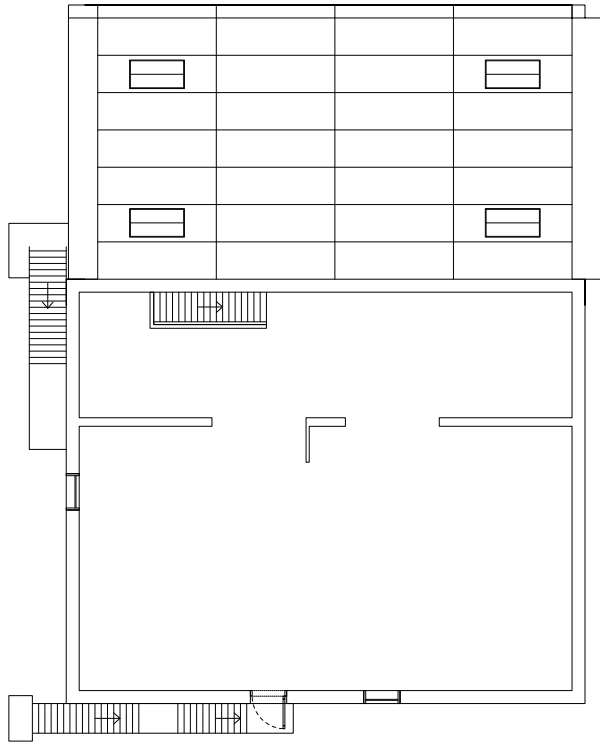




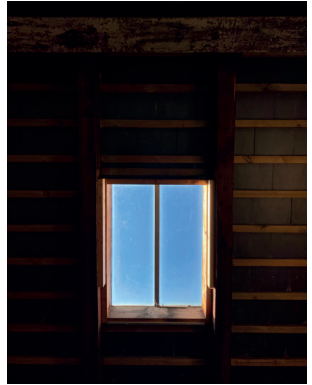
Developed surface of the future
body and movement room



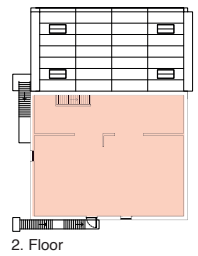
1. Floor



2. Floor



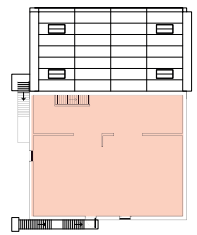
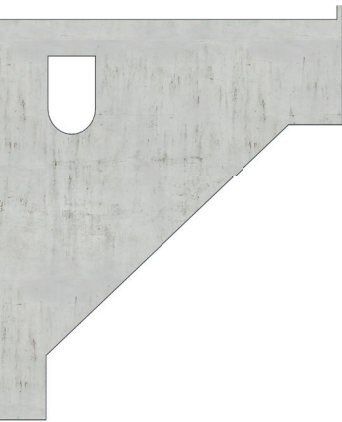
Future acting and voice training space



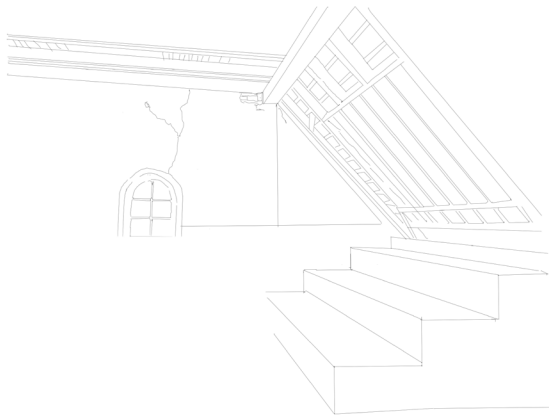
2. Floor

Developed surface of the future
acting and voice room

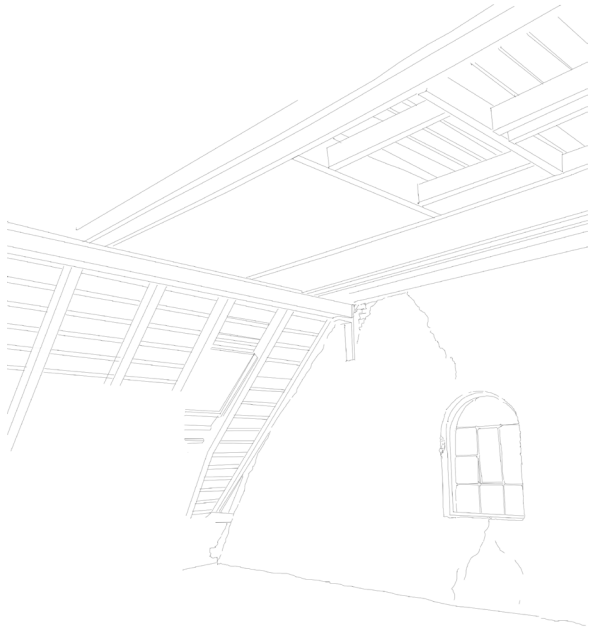




2. Floor



2. Floor



Future acting and voice training
space

The only way to access the first and second floor is an external staircase shown in the drawing. This presents some potential problems with accessibility, which is why we considered installing an elevator inside the building.



